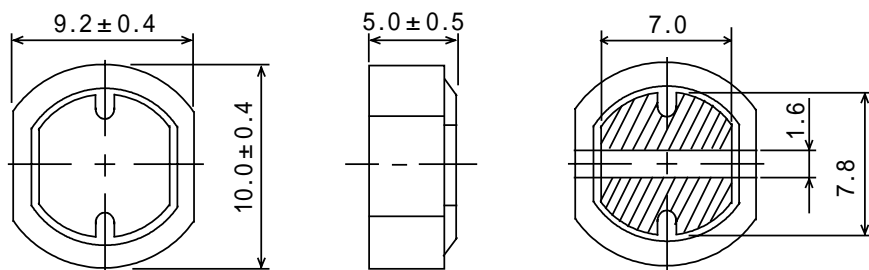


# 仕様書

形名  
CDR105

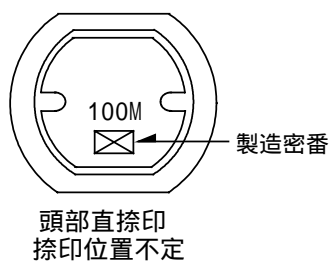
## 1. 外形

### 1-1. 寸法図(mm)

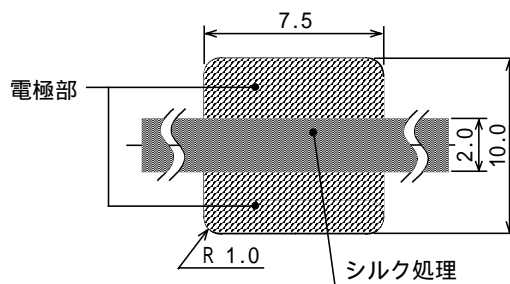


\* 公差のない寸法は参考値とする。

### 1-2. 捺印表示例

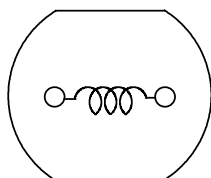


### 1-3. 推奨ランド図 (mm)



電極（端子）間の隙間はシルク処理をして御使用下さい。

### 2-1. 端子接続図(裏面図)



RoHS  
compliance  
Cd: Max. 0.01wt%  
others: Max. 0.1wt%

# 仕様書

形名  
CDR105

## 2-2. 電気的特性 (リール梱包の場合)

NO.	品名	表示	インダクタンス [以内] 1	D.C.R. ( ) [以下] (at 20 )	定格電流 (A) 2	S.R.F. (MHz) [参考値]	スミダ コード
01	CDR1Ø5NP-1ØØMC	100M	+20% 10 µH - 15%	0.06	2.53	31	4721-0139
02	CDR1Ø5NP-12ØMC	120M	+20% 12 µH - 15%	0.06	2.31	27	4721-0140
03	CDR1Ø5NP-15ØMC	150M	+20% 15 µH - 15%	0.07	2.06	27	4721-0141
04	CDR1Ø5NP-18ØMC	180M	+20% 18 µH - 15%	0.08	1.89	26	4721-0142
05	CDR1Ø5NP-22ØMC	220M	+20% 22 µH - 15%	0.09	1.71	21	4721-0143
06	CDR1Ø5NP-27ØMC	270M	+20% 27 µH - 15%	0.11	1.54	18	4721-0144
07	CDR1Ø5NP-33ØMC	330M	+20% 33 µH - 15%	0.12	1.39	16	4721-0145
08	CDR1Ø5NP-39ØMC	390M	+20% 39 µH - 15%	0.16	1.28	15	4721-0146
09	CDR1Ø5NP-47ØMC	470M	+20% 47 µH - 15%	0.18	1.17	14	4721-0147
10	CDR1Ø5NP-56ØMC	560M	+20% 56 µH - 15%	0.19	1.07	12	4721-0149
11	CDR1Ø5NP-68ØMC	680M	+20% 68 µH - 15%	0.22	0.97	11	4721-0150
12	CDR1Ø5NP-82ØMC	820M	+20% 82 µH - 15%	0.28	0.88	10	4721-0151
13	CDR1Ø5NP-1Ø1MC	101M	+20% 100 µH - 15%	0.35	0.80	7.0	4721-0152
14	CDR1Ø5NP-121MC	121M	+20% 120 µH - 15%	0.38	0.73	6.5	4721-0153
15	CDR1Ø5NP-151MC	151M	+20% 150 µH - 15%	0.45	0.65	5.8	4721-0154
16	CDR1Ø5NP-181MC	181M	+20% 180 µH - 15%	0.62	0.60	5.3	4721-0155
17	CDR1Ø5NP-221MC	221M	+20% 220 µH - 15%	0.69	0.54	5.2	4721-0156
18	CDR1Ø5NP-271MC	271M	+20% 270 µH - 15%	0.78	0.49	4.6	4721-0157
19	CDR1Ø5NP-331MC	331M	+20% 330 µH - 15%	1.03	0.44	4.2	4721-0158
20	CDR1Ø5NP-391MC	391M	+20% 390 µH - 15%	1.18	0.41	3.6	4721-0160
21	CDR1Ø5NP-471MC	471M	+20% 470 µH - 15%	1.60	0.37	3.6	4721-0162

# 仕様書

形名 CDR105
--------------

## 2-3. 電気的特性 (箱梱包の場合)

NO.	品名	表示	インダクタンス [以内] 1	D.C.R. ( ) [以下] (at 20 )	定格電流 (A) 2	S.R.F. (MHz) [参考値]	スミダ コード
22	CDR1Ø5NP-1ØØMB	100M	+20% 10 µH - 15%	0.06	2.53	31	4721-0163
23	CDR1Ø5NP-12ØMB	120M	+20% 12 µH - 15%	0.06	2.31	27	4721-0164
24	CDR1Ø5NP-15ØMB	150M	+20% 15 µH - 15%	0.07	2.06	27	4721-0165
25	CDR1Ø5NP-18ØMB	180M	+20% 18 µH - 15%	0.08	1.89	26	4721-0166
26	CDR1Ø5NP-22ØMB	220M	+20% 22 µH - 15%	0.09	1.71	21	4721-0167
27	CDR1Ø5NP-27ØMB	270M	+20% 27 µH - 15%	0.11	1.54	18	4721-0168
28	CDR1Ø5NP-33ØMB	330M	+20% 33 µH - 15%	0.12	1.39	16	4721-0169
29	CDR1Ø5NP-39ØMB	390M	+20% 39 µH - 15%	0.16	1.28	15	4721-0170
30	CDR1Ø5NP-47ØMB	470M	+20% 47 µH - 15%	0.18	1.17	14	4721-0171
31	CDR1Ø5NP-56ØMB	560M	+20% 56 µH - 15%	0.19	1.07	12	4721-0173
32	CDR1Ø5NP-68ØMB	680M	+20% 68 µH - 15%	0.22	0.97	11	4721-0174
33	CDR1Ø5NP-82ØMB	820M	+20% 82 µH - 15%	0.28	0.88	10	4721-0175
34	CDR1Ø5NP-1Ø1MB	101M	+20% 100 µH - 15%	0.35	0.80	7.0	4721-0176
35	CDR1Ø5NP-121MB	121M	+20% 120 µH - 15%	0.38	0.73	6.5	4721-0177
36	CDR1Ø5NP-151MB	151M	+20% 150 µH - 15%	0.45	0.65	5.8	4721-0178
37	CDR1Ø5NP-181MB	181M	+20% 180 µH - 15%	0.62	0.60	5.3	4721-0179
38	CDR1Ø5NP-221MB	221M	+20% 220 µH - 15%	0.69	0.54	5.2	4721-0180
39	CDR1Ø5NP-271MB	271M	+20% 270 µH - 15%	0.78	0.49	4.6	4721-0181
40	CDR1Ø5NP-331MB	331M	+20% 330 µH - 15%	1.03	0.44	4.2	4721-0182
41	CDR1Ø5NP-391MB	391M	+20% 390 µH - 15%	1.18	0.41	3.6	4721-0184
42	CDR1Ø5NP-471MB	471M	+20% 470 µH - 15%	1.60	0.37	3.6	4721-0185

1: 測定周波数 L                    10 µH ~ 82 µH ; at 2.52 MHz  
     100 µH ~ 470 µH ; at 1 kHz

2: 定格電流は直流重畳特性に於て、インダクタンスが公称値より-20%となる電流、もしくは直流電流を流した時のコイルの発熱が t=40 となる電流値の少ない方の値。(Ta=20 を基準とする。)

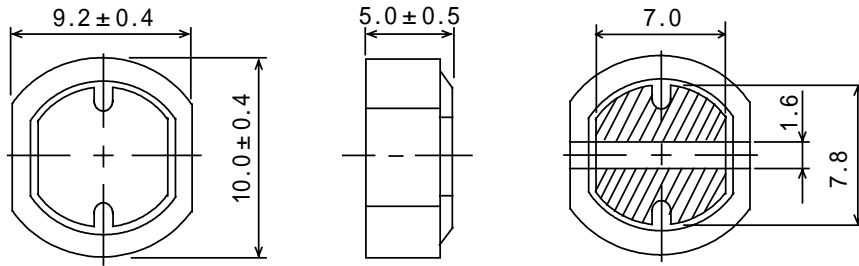
3. 保存温度範囲            - 40 ~ +100  
 使用温度範囲            - 40 ~ +100 (コイルの発熱を含む。)

# SPECIFICATION

TYPE CDR105
----------------

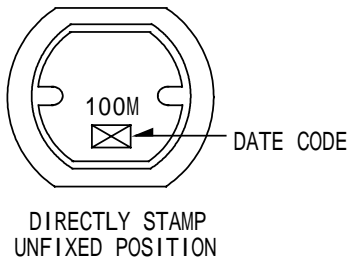
## 1 . APPEARANCE

### 1-1 . DIMENSIONS(mm)

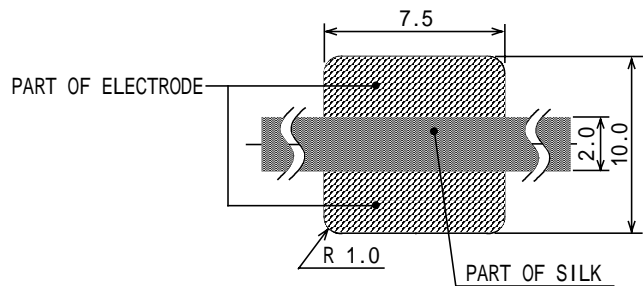


\* DIMENSIONS WITHOUT TOLERANCE ARE APPROX.

### 1-2 . STAMP (E.G.)



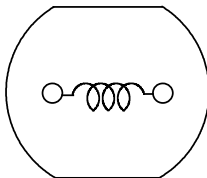
### 1-3.RECOMMENDED LAND PATTERNS DIMENSION(mm)



PLEASE COAT WITH SILK SCREEN BETWEEN THE TWO ELECTRODES.

## 2 . COIL SPECIFICATION

### 2-1 . CONNECTION (BOTTOM VIEW)



RoHS compliance Cd:Max.0.01wt% others:Max.0.1wt%
---

# SPECIFICATION

TYPE CDR105
----------------

## 2-2. ELECTRICAL CHARACTERISTICS (IN THE CASE OF REEL)

NO.	PART NO.	STAMP	INDUCTANCE [WITHIN] 1	D.C.R. ( ) [MAX.] (at 20 )	RATED CURRENT (A) 2	S.R.F. (MHz) [TYP.]	SUMIDA CODE
01	CDR1Ø5NP-1ØØMC	100M	+ 20% 10 µH - 15%	0.06	2.53	31	4721-0139
02	CDR1Ø5NP-12ØMC	120M	+ 20% 12 µH - 15%	0.06	2.31	27	4721-0140
03	CDR1Ø5NP-15ØMC	150M	+ 20% 15 µH - 15%	0.07	2.06	27	4721-0141
04	CDR1Ø5NP-18ØMC	180M	+ 20% 18 µH - 15%	0.08	1.89	26	4721-0142
05	CDR1Ø5NP-22ØMC	220M	+ 20% 22 µH - 15%	0.09	1.71	21	4721-0143
06	CDR1Ø5NP-27ØMC	270M	+ 20% 27 µH - 15%	0.11	1.54	18	4721-0144
07	CDR1Ø5NP-33ØMC	330M	+ 20% 33 µH - 15%	0.12	1.39	16	4721-0145
08	CDR1Ø5NP-39ØMC	390M	+ 20% 39 µH - 15%	0.16	1.28	15	4721-0146
09	CDR1Ø5NP-47ØMC	470M	+ 20% 47 µH - 15%	0.18	1.17	14	4721-0147
10	CDR1Ø5NP-56ØMC	560M	+ 20% 56 µH - 15%	0.19	1.07	12	4721-0149
11	CDR1Ø5NP-68ØMC	680M	+ 20% 68 µH - 15%	0.22	0.97	11	4721-0150
12	CDR1Ø5NP-82ØMC	820M	+ 20% 82 µH - 15%	0.28	0.88	10	4721-0151
13	CDR1Ø5NP-1Ø1MC	101M	+ 20% 100 µH - 15%	0.35	0.80	7.0	4721-0152
14	CDR1Ø5NP-121MC	121M	+ 20% 120 µH - 15%	0.38	0.73	6.5	4721-0153
15	CDR1Ø5NP-151MC	151M	+ 20% 150 µH - 15%	0.45	0.65	5.8	4721-0154
16	CDR1Ø5NP-181MC	181M	+ 20% 180 µH - 15%	0.62	0.60	5.3	4721-0155
17	CDR1Ø5NP-221MC	221M	+ 20% 220 µH - 15%	0.69	0.54	5.2	4721-0156
18	CDR1Ø5NP-271MC	271M	+ 20% 270 µH - 15%	0.78	0.49	4.6	4721-0157
19	CDR1Ø5NP-331MC	331M	+ 20% 330 µH - 15%	1.03	0.44	4.2	4721-0158
20	CDR1Ø5NP-391MC	391M	+ 20% 390 µH - 15%	1.18	0.41	3.6	4721-0160
21	CDR1Ø5NP-471MC	471M	+ 20% 470 µH - 15%	1.60	0.37	3.6	4721-0162

# SPECIFICATION

TYPE CDR105
----------------

## 2-3.ELECTRICAL CHARACTERISTICS (IN THE CASE OF BOX)

NO.	PART NO.	STAMP	INDUCTANCE [WITHIN] 1	D.C.R. ( ) [MAX.] (at 20 )	RATED CURRENT (A) 2	S.R.F. (MHz) [TYP.]	SUMIDA CODE
22	CDR1Ø5NP-1ØØMB	100M	+20% 10 µH - 15%	0.06	2.53	31	4721-0163
23	CDR1Ø5NP-12ØMB	120M	+20% 12 µH - 15%	0.06	2.31	27	4721-0164
24	CDR1Ø5NP-15ØMB	150M	+20% 15 µH - 15%	0.07	2.06	27	4721-0165
25	CDR1Ø5NP-18ØMB	180M	+20% 18 µH - 15%	0.08	1.89	26	4721-0166
26	CDR1Ø5NP-22ØMB	220M	+20% 22 µH - 15%	0.09	1.71	21	4721-0167
27	CDR1Ø5NP-27ØMB	270M	+20% 27 µH - 15%	0.11	1.54	18	4721-0168
28	CDR1Ø5NP-33ØMB	330M	+20% 33 µH - 15%	0.12	1.39	16	4721-0169
29	CDR1Ø5NP-39ØMB	390M	+20% 39 µH - 15%	0.16	1.28	15	4721-0170
30	CDR1Ø5NP-47ØMB	470M	+20% 47 µH - 15%	0.18	1.17	14	4721-0171
31	CDR1Ø5NP-56ØMB	560M	+20% 56 µH - 15%	0.19	1.07	12	4721-0173
32	CDR1Ø5NP-68ØMB	680M	+20% 68 µH - 15%	0.22	0.97	11	4721-0174
33	CDR1Ø5NP-82ØMB	820M	+20% 82 µH - 15%	0.28	0.88	10	4721-0175
34	CDR1Ø5NP-1Ø1MB	101M	+20% 100 µH - 15%	0.35	0.80	7.0	4721-0176
35	CDR1Ø5NP-121MB	121M	+20% 120 µH - 15%	0.38	0.73	6.5	4721-0177
36	CDR1Ø5NP-151MB	151M	+20% 150 µH - 15%	0.45	0.65	5.8	4721-0178
37	CDR1Ø5NP-181MB	181M	+20% 180 µH - 15%	0.62	0.60	5.3	4721-0179
38	CDR1Ø5NP-221MB	221M	+20% 220 µH - 15%	0.69	0.54	5.2	4721-0180
39	CDR1Ø5NP-271MB	271M	+20% 270 µH - 15%	0.78	0.49	4.6	4721-0181
40	CDR1Ø5NP-331MB	331M	+20% 330 µH - 15%	1.03	0.44	4.2	4721-0182
41	CDR1Ø5NP-391MB	391M	+20% 390 µH - 15%	1.18	0.41	3.6	4721-0184
42	CDR1Ø5NP-471MB	471M	+20% 470 µH - 15%	1.60	0.37	3.6	4721-0185

1: MEASURED FREQUENCY L 10 µH ~ 82 µH ; at 2.52 MHz  
100 µH ~ 470 µH ; at 1 kHz

2: THIS INDICATES THE VALUE OF CURRENT WHEN THE INDUCTANCE IS 20% LOWER THAN ITS NOMINAL VALUE  
AT D.C. SUPERPOSITION OR D.C. CURRENT WHEN T=40 WHICHEVER IS LOWER.(Ta=20 )

3 . STORAGE TEMPERATURE RANGE : - 40 ~ +100  
OPERATING TEMPERATURE RANGE: - 40 ~ +100 (INCLUDING SELF TEMPERATURE RISE)